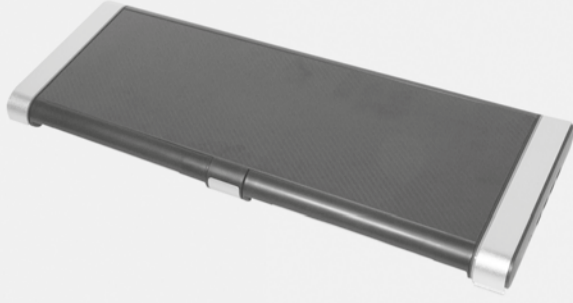
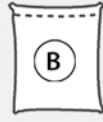


HT 42 L

Hyper Gaming Monitor Rack
Hyper Gaming Monitor Riser



(x1)



(x4)

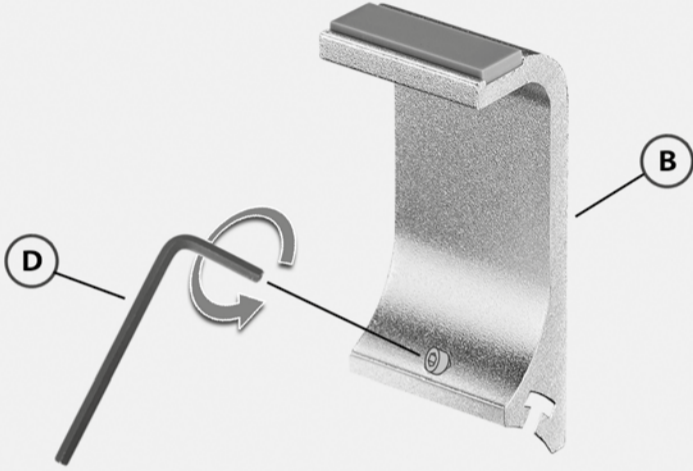


(x1)

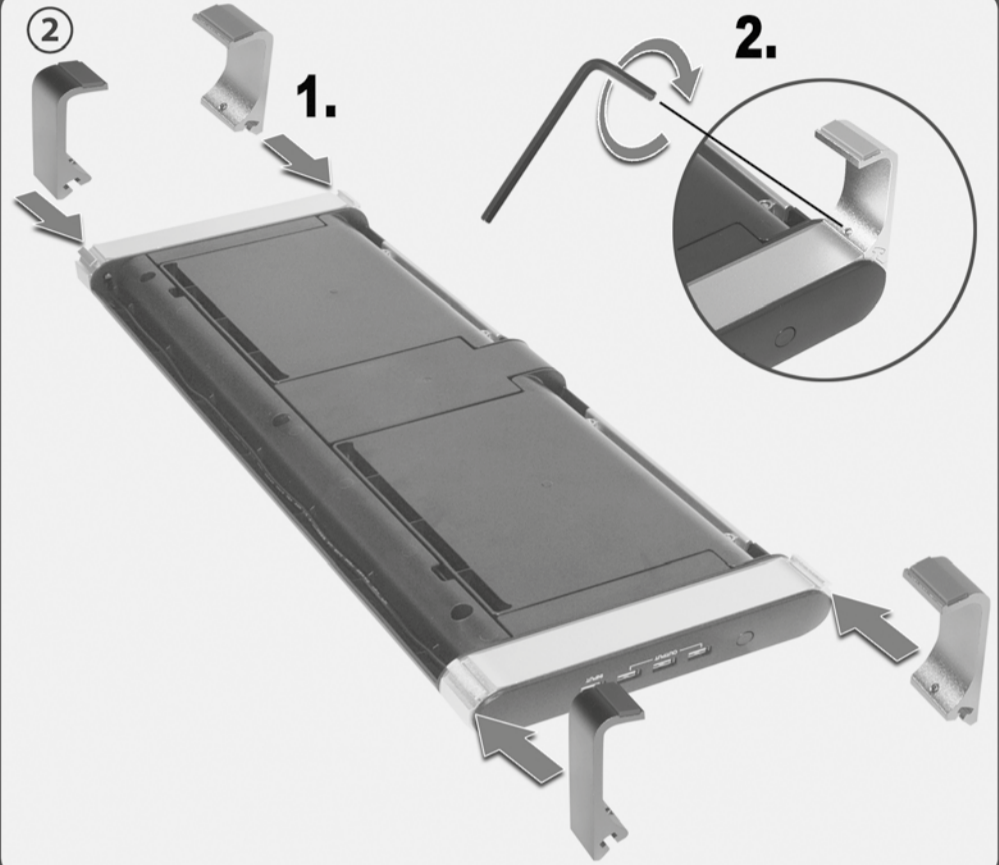


2 mm (x1)

①



②

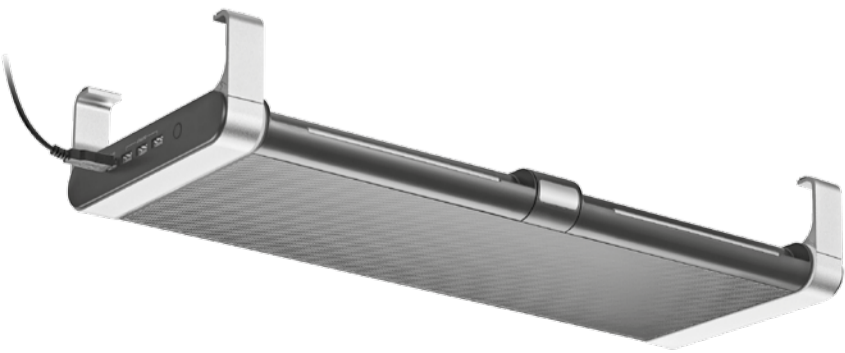
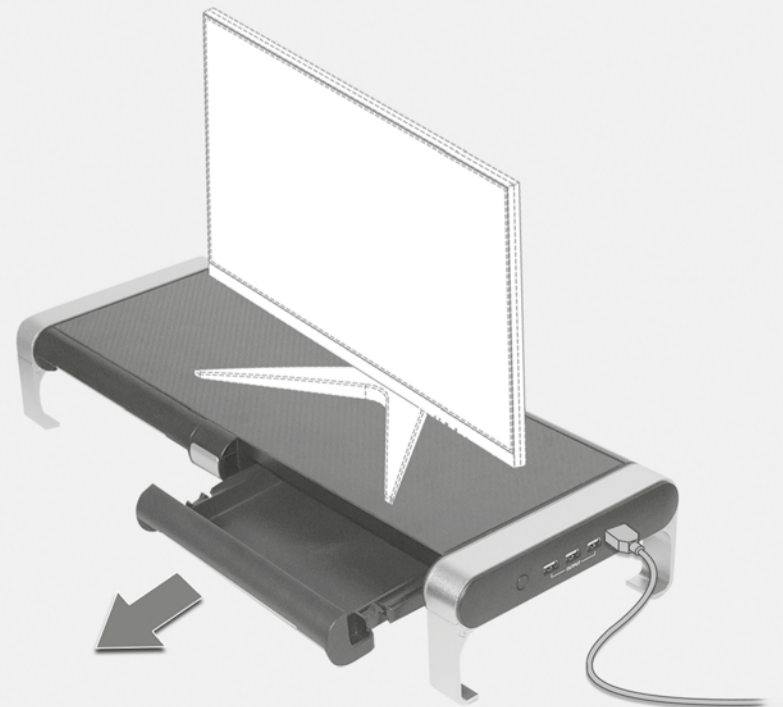


③



Drücken Sie die Taste, um die Lichtmodi zu wechseln, und halten Sie sie zwei Sekunden lang gedrückt, um das Licht auszuschalten. Press the button to switch the light modes. Press for two seconds to turn off the light.

④



Montageanleitung Assembly Instructions

Montageanleitung
Montageanleitung
Önyia sverphölyörü
Assemble Instructions
Návod pro montáž
Instrucciones de montaje
Instruccões de montagem
Montaj Rehberi
Montajma Instruccija
Montaringsanvisning
Faiğaldusjhis
Asemnusoñje
Asennusohje
Instrucciones de montaje
Montingsvejledning
Montážas instrukcja
Instruzioni d'uso

HT 42 L

my wall
mount accessories

Hyper Gaming Monitor Rack
Hyper Gaming Monitor Riser

