



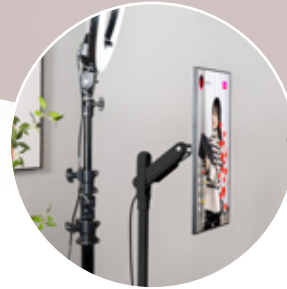
WE FULFILL YOUR WISHES

with our highlights
in July

Just ordered - and already shipped!

IN STOCK

Mobile stand for flat screens *with spring system*



HT 34 L

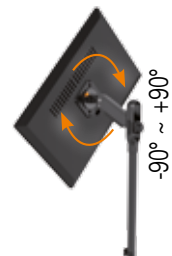
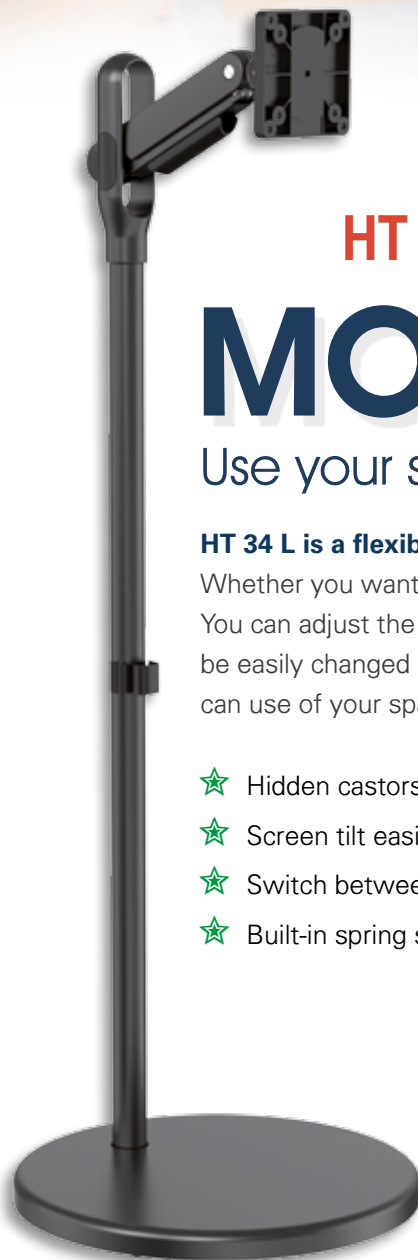
MORE FLEXIBILITY

Use your screen wherever you want

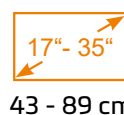
HT 34 L is a flexible aid that will give you a lot of fun.

Whether you want to play, work, stream, communicate or relax, this monitor stand adapt. You can adjust the height and angle of your screen quickly and easily. The location can also be easily changed because of the integrated castors. So you always have the best view and can use of your space perfectly.

- ★ Hidden castors in the base ensure flexible room design
- ★ Screen tilt easily adjustable according to needs
- ★ Switch between portrait or landscape format in just a few simple steps
- ★ Built-in spring system allows easy height adjustment



For flat screens: 17" - 35" (43 - 89 cm)
 Loads: 2 - 10 kg
 Tilt: -90° - +90°
 Screen horizontal adjustment: + / - 90°
 VESA: 75 / 100
 Height: 954 - 1154 mm
 Height adjustable by spring system
 With hidden castors in the base



for cash register systems
(Point of Sale)

WITH CARD, PLEASE

QUICK AND SAFE - The holder for cashless payment systems

The HT 35 L is a practical fixed holder for card terminals, which is suitable for almost all models. The padded mounting clips can be easily adjusted to the width of your device. With the flexible joint and the integrated handle, your customers can easily turn and tilt the terminal in any direction.

**Enable your customers to pay conveniently,
quickly and securely without cash.**

- ▶ Flexible width adjustment: suitable for most device sizes and shapes
- ▶ 360° rotation function with handle enables viewing from all sides
- ▶ Can be tilted up or down for optimum readability of the display
- ▶ The screw base provides additional stability and safety



HT 35 L Card Terminal Holder



7,1 - 10,9 cm



-45° - +45°



360°

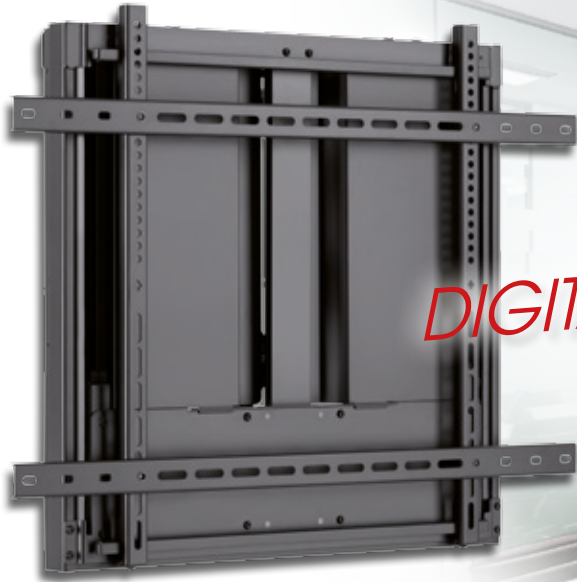


For devices with a width of 2.8" - 4.3" (7,1 - 10,9 cm)

Tilt: + 45° ~ - 45°

Swivel: 360°

With cable management, with silicone pads on the mounting brackets



the
DIGITAL TREND



for 40 - 60 kg screens

The bracket for the new TV generation

TOUCHSCREENS / TV SCREENS / WHITEBOARDS

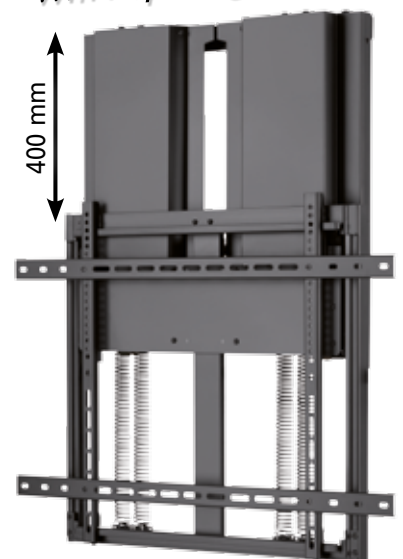
- ▷ Stepless height adjustment with just one hand
- ▷ Depth of only 127 mm: the mount disappears behind the screen and is therefore invisible.
- ▷ Always on trend: suitable for touchscreens, TV screens, whiteboards
- ▷ Time saving due to the simple installation

HP 34-1 L

Interactive Whiteboard and TV Bracket

With a simple handle, the HP 34-1 L can be raised and lowered to any position. This feature is ideal for wall-mounting whiteboards in schools and universities. The clever design makes installation quick and easy. With a depth of only 127 mm, the mount lies flat against the wall and fits into any room.

with spring system



For flat screens: 50" - 75" (127 - 190 cm)
 Loads: from 40 to 60 kg
 VESA: 200x200 - 800x600
 Only 127 mm deep
 With spring system
 Smooth and effortless height adjustment up to 400 mm



127 - 190 cm



40 - 60 kg



MUST HAVE IT!

The HT 36 L bracket offers limitless possibilities.

Because of the 2 ball joints and angle adjustment you can turn and tilt the tablet or smartphone in any direction. The stylish design ensures an elegant appearance. The solid stand keeps your device securely in position, whether at home or in the office.

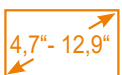
- + Ball joints rotate, tilt and swivel in all directions
- + Large, sturdy base for a stable stand
- + Silicone pads protect the device from scratches
- + Light and handy: can be used in any location



HT 36 L Full-motion Desk Bracket for Tablets & Smartphones

For most 4,7" - 12,9" (11,9 - 32,8 cm) phones and tablets

Loads:	up to 1 kg
Tilt:	- 60° - + 210°
Swivel	104°
Screen horizontal adjustment:	360°
Width of clamp:	128 - 224 mm



11,9 - 32,8 cm



1 kg



-60° - +210°



104°



360°



Good News

Just ordered - and already shipped!

IN STOCK

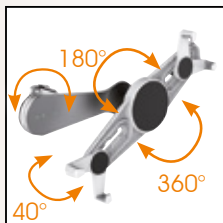
AVAILABLE AGAIN



for 2 devices side by side



7" - 10,4"



movable with ball joint

PURE ENTERTAINMENT in your car.

Entertainment in the back seat for long trips.

The tablet headrest holder is specially designed for the neckrest of the car, so you can be entertained in the back seat over long distances. The HT 4 L is ideal for passengers who like to watch movies, read e-books, play games, etc. while driving. The tablet holder has a ball joint, which enables a full 360° degree rotation and the ability to tilt the display from -20° to +20°.

- ✕ Due to the ball-and-socket joint, the tablet can be moved in all directions
- ✕ Effortless attachment to the car seat, no tools required
- ✕ Adjustable clamping range allows the use of different tablet sizes

HT 4 L

Tablet Bracket for the Car Headrest

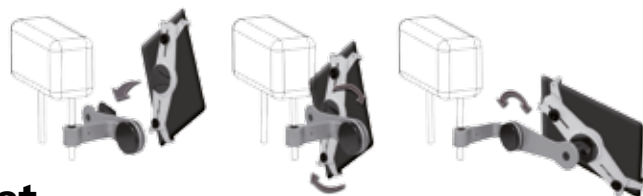
For most 7" - 10,4" Tablets

Tilt: 40°

Swivel: 360°

Clamp range: 10 - 15 mm

It is also possible to mount 2 holders side by side



17,8 - 26,4 cm



360°



40°

